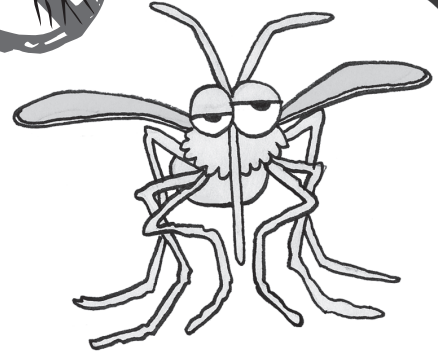




Mosquitofish! Game



Supplies needed: scissors, glue sticks, crayons

Directions to make game pieces:

1. Color the pictures on the two different game sheets.
2. Glue the two game sheets back to back.
3. Cut out the cards.
4. Write your name very small on each card.
5. Find at least two partners with decks of cards, mix the decks, and play!

How to play "Mosquitofish!"

Shuffle the cards (each player adds their set of cards to the deck).

Each player draws 5 cards to start the game.

Place the rest of the deck face down. This is the "draw" pile.

Play starts going clockwise from the youngest player.

Each player plays one card face up in the "play" pile (next to the "draw" pile) per turn.

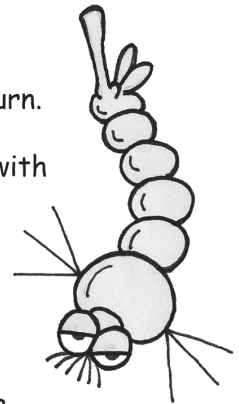
Play follows the mosquito life cycle (egg, larva, pupa, adult...) and the game starts with either an "Eggs" or "Adult" card being played.

If an "Eggs" card is showing in the "play" pile, you could play a "Larva" card.

If a "Larva" card is showing, you could play a "Pupa" card.

If a "Pupa" card is showing, you could play an "Adult" card.

If an "Adult" card is showing, you could play a "Eggs" card.



You may play a "Mosquitofish!" card when a "Larva", "Pupa" or "Eggs" card is showing (mosquitofish eat larvae, pupae and mosquito eggs.) After a "Mosquitofish!" card is played, the Life Cycle starts over and the next player must play an "Eggs" or "Adult" card.

You may also play the same type of card that is showing in the "play" pile.

If you do not have a card that you can play, draw 1 card and it is the next person's turn.

If you play an incorrect card, you must keep that card and draw another.

Special Cards

Some cards are special...when you play a card that has a command, it affects the person whose turn it is next.

"DRAW 1" - whoever goes next has to draw 1 card from the "draw" pile, then play.

"REVERSE!" - This reverses the order of play. Play starts out clockwise, so if this card is played, play would switch to counter-clockwise.

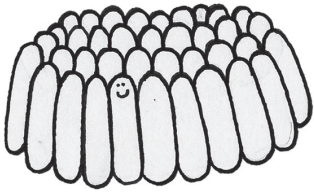
"SKIP!" - This skips the next player.

Winning

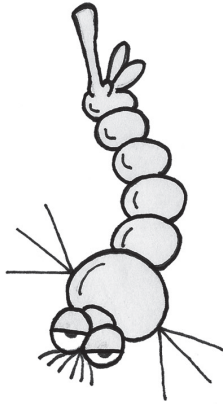
When you have only one card left, you are close to winning, but you must say "MOSQUITOFISH!" before anyone else does, otherwise you must draw 2 cards immediately.

Whoever uses all of their cards first wins!

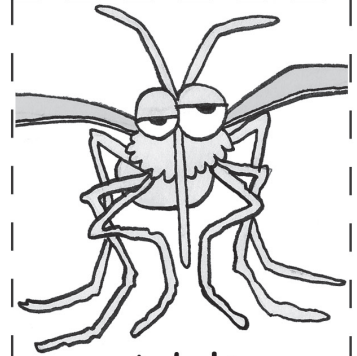
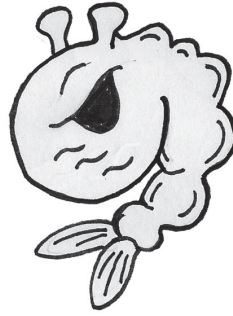
Eggs



Larva

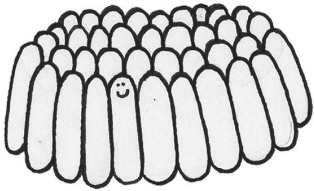


Pupa

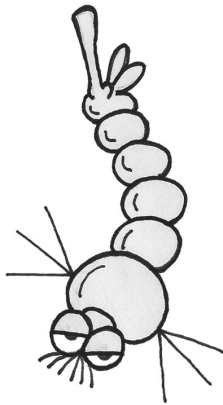


Adult

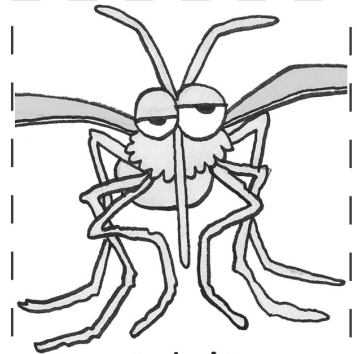
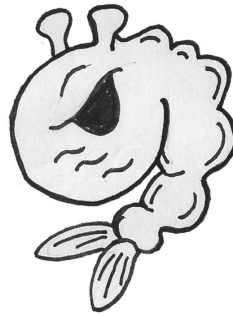
Eggs



Larva

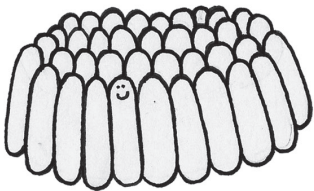


Pupa

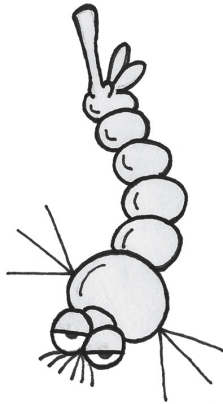


Adult

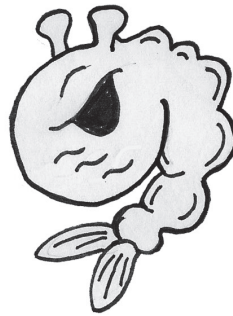
Eggs



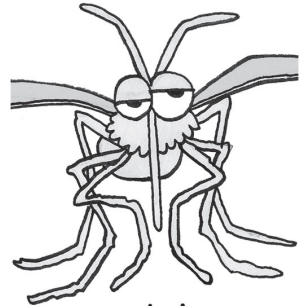
Larva



Pupa



REVERSE

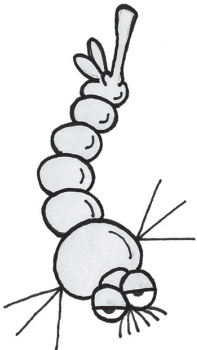


Adult

DRAW 2!



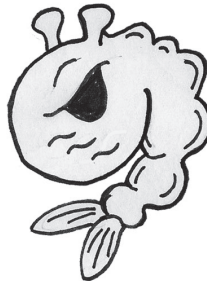
Mosquitofish!



Larva

SKIP!

REVERSE!



Pupa

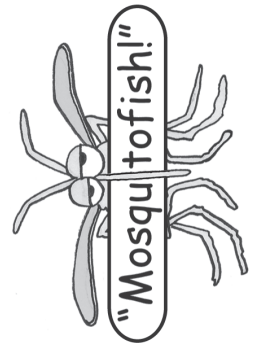
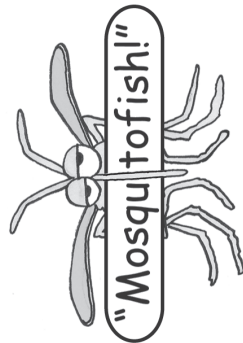
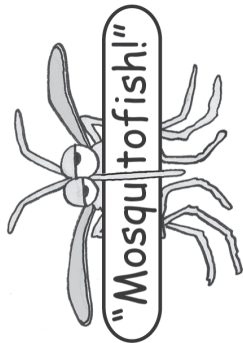
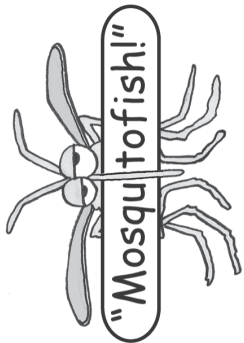
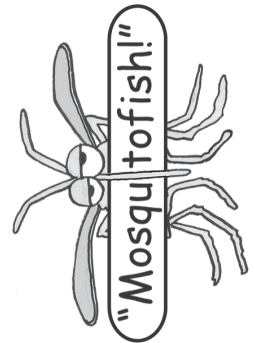
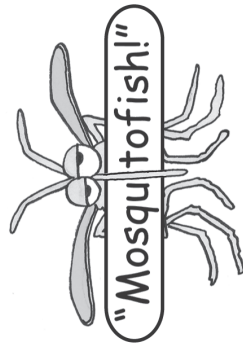
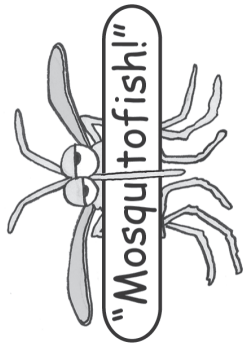
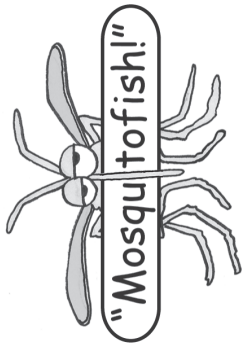
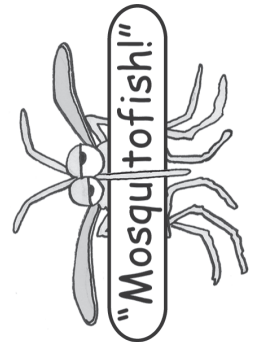
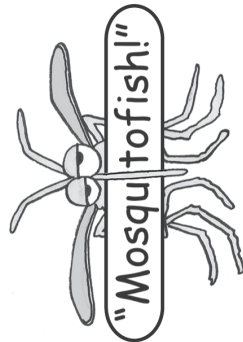
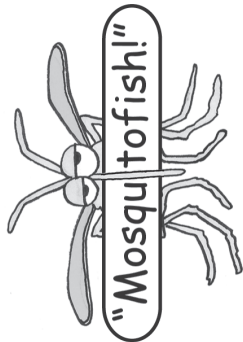
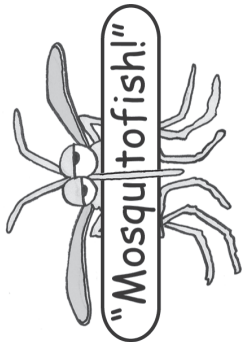
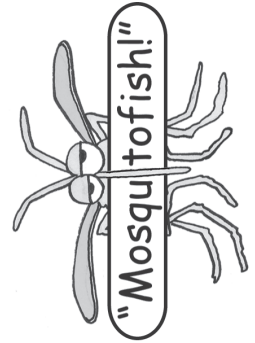
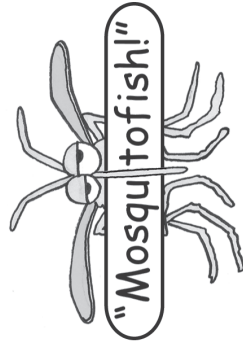
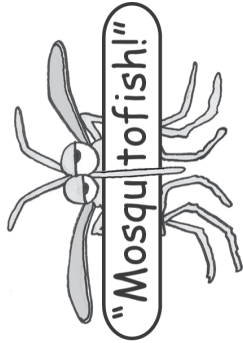
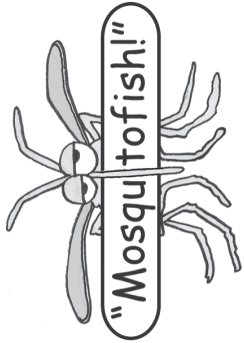
DRAW 2!



Mosquitofish!



MOSQUITO SCHOOL



MOSQUITOFISH! GAME

ALL GRADES